

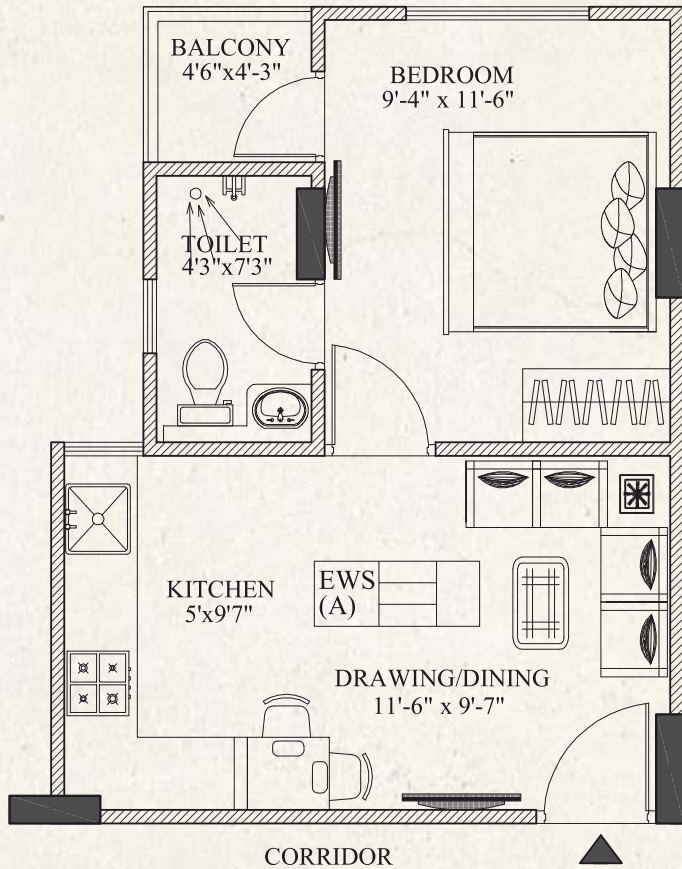


जयसिंहपुरा, मेडिकल हब के पास,
अजमेर रोड़, जयपुर



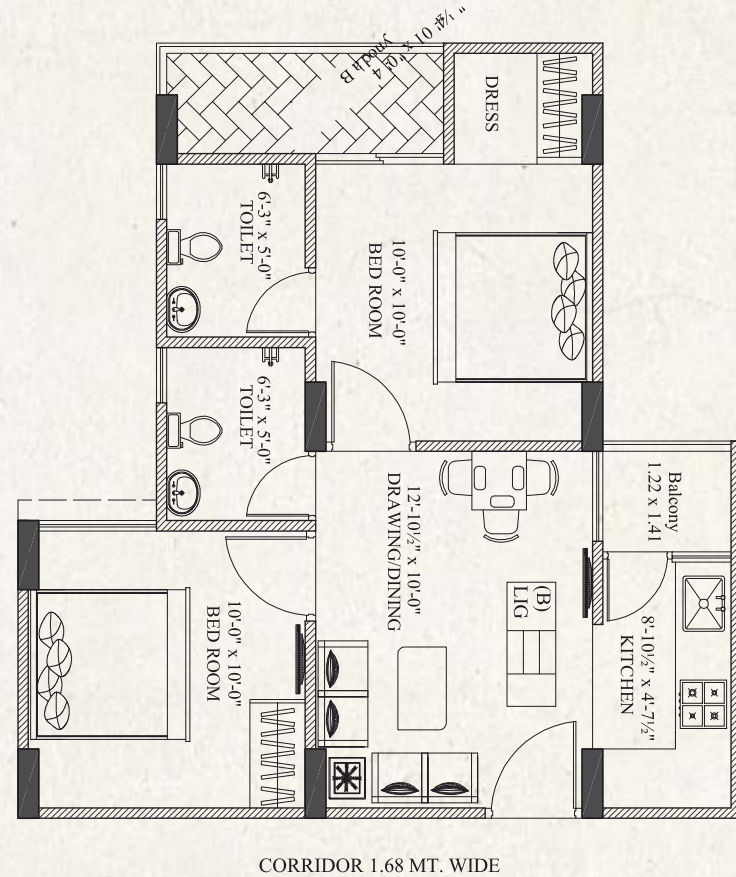
FLOOR PLAN

1 BHK UNIT - EWS-A



EWS-A UNIT (Area in SQ.FT)			
Built-up	Saleable Area	Balcony & Projection	Price
323.87	451.27	25.39	14.00 lakh

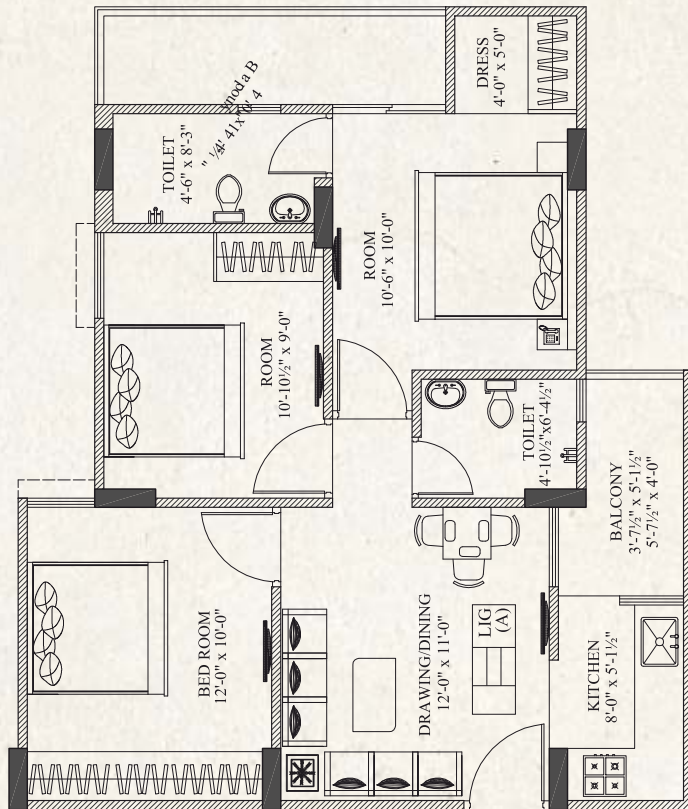
2 BHK UNIT - LIG-B



LIG-B UNIT (Area in SQ.FT)			
Built-up	Saleable Area	Balcony & Projection	Price
507.87	666.25	64.34	22.00 lakh

FLOOR PLAN

3 BHK UNIT - LIG-A



CORRIDOR 1.68 MT. WIDE

LIG-A UNIT (Area in SQ.FT)			
Built-up	Saleable Area	Balcony & Projection	Price
673.89	852.94	105.66	28.00 lakh

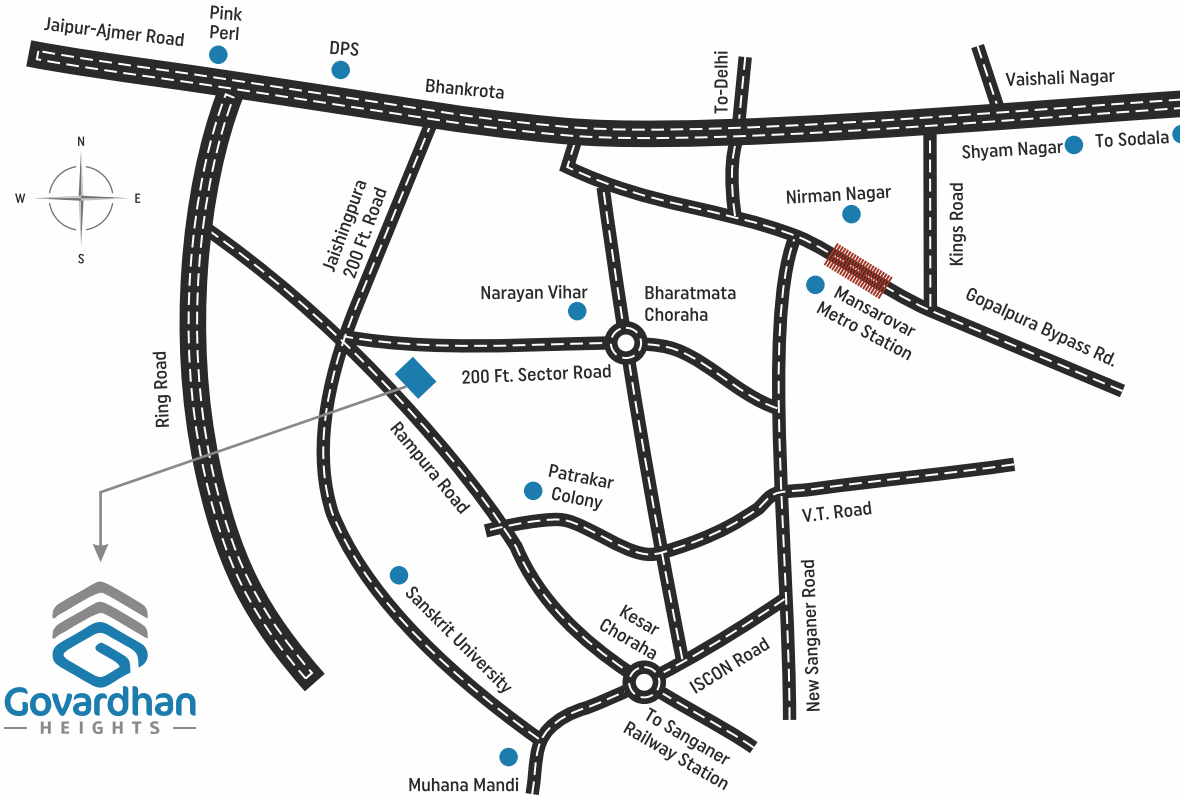
AMENITIES & FEATURES

Swimming Pool	Party Hall	Gymnasium
Indoor Games	Jogging Track	Kids Play Area
Mini Theatre	Library	Grocery Store
Meditation & Yoga Room	Intercom	Medical Facility
Guest Room Facility	Gas Pipeline	CCTV Camera
Common Area Power Backup	Laundry Facility	Wi Fi Facility
Emergency Alarm	Tour & Travel Desk	Kangen Water Machine

LOCATION MAP



RAJ/P/2019/1041
www.rera.rajasthan.gov.in



- Metro Station - 10 min.
- Railway Station - 20 min.
- Airport - 20 min.
- Mahendra SEZ - 7 min.
- Vaishali Nagar Jaipur - 10 min.
- Ajmer Highway - 5 min.
- Nearest Hospital - 5 min.
- Nearest Clinic - 1 min.
- Nearest Bank/ATM - 2 min.
- Nearest Petrol Pump - 5 min.
- Hotels & Restaurants - 3 min.



 **86 87 88 22 22**

Aashish Group: 5th Floor, Sunny Mart, New Aatish Market,
Mansarovar, Jaipur 302020

Developed By:



RERA Reg. No.:
RAJ/P/2019/1041

GOVARDHAN HEIGHTS LLP

Disclaimer: The information contained herein cannot form part of any offer or contract. While every reasonable care has been taken in providing this information, the owner of their agents cannot be held responsibility for any inaccuracies. Illustration showing in the brochure are artist's impressions and serve only to give an approximate idea of the project. All impressions and plans are subject to amendments as may be required for the betterment of the project allowed within the laws.